

FITC anti-human IgG Fc Antibody

| | |
|--------------------------|---|
| Catalog# / Size | 410719 / 25 tests 410720 / 100 tests |
| Clone | M1310G05 |
| Regulatory Status | RUO |
| Isotype | Rat IgG2a, κ |
| Description | IgG Fc is a homodimer that is composed of the constant region of the two heavy chains that form the IgG molecule. The Fc fragment mediates opsonization, antibody dependent cellular cytotoxicity (ADCC), and complement activation through binding to Fc receptors such as CD16, CD32, CD64, and the complement factor C1. |

Product Details

| | |
|-------------------------------|---|
| Verified Reactivity | Human |
| Antibody Type | Monoclonal |
| Host Species | Rat |
| Immunogen | Human Siglec-E-IgG Fc fusion protein. |
| Formulation | Phosphate-buffered solution, pH 7.2, containing 0.09% sodium azide and BSA (origin USA) |
| Preparation | The antibody was purified by affinity chromatography and conjugated with FITC under optimal conditions. |
| Concentration | Lot-specific (to obtain lot-specific concentration, please enter the lot number in our Concentration and Expiration Lookup or Certificate of Analysis online tools.) |
| Storage & Handling | The antibody solution should be stored undiluted between 2°C and 8°C, and protected from prolonged exposure to light. Do not freeze. |
| Application | FC - Quality tested |
| Recommended Usage | Each lot of this antibody is quality control tested by immunofluorescent staining with flow cytometric analysis. For flow cytometric staining, the suggested use of this reagent is 5 μ l per million cells in 100 μ l staining volume or 5 μ l per 100 μ l of whole blood. |
| Excitation Laser | Blue Laser (488 nm) |
| Application Notes | Clone M1310G05 recognizes IgG in the membrane of memory B cells, has a stronger affinity for IgG1 and IgG3 than for IgG2 and IgG4, and does not cross react with IgD, IgE, or IgM. |
| Product Citations | 1. Banerjee A, <i>et al.</i> 2021. iScience. 24(5):102477. PubMed |
| RRID | AB_2721575 (BioLegend Cat. No. 410719) AB_2721576 (BioLegend Cat. No. 410720) |

Antigen Details

| | |
|---------------------------|---|
| Structure | Homodimer formed by the constant region of the IgG heavy chain. |
| Ligand/Receptor | CD16, CD32, and CD64. |
| Cell Type | B cells |
| Biology Area | Immunology |
| Antigen References | 1. Paul, WE. (2003). <i>Fundamental Immunology</i> . Philadelphia, PA: Lippincott, Williams, & Wilkins. |

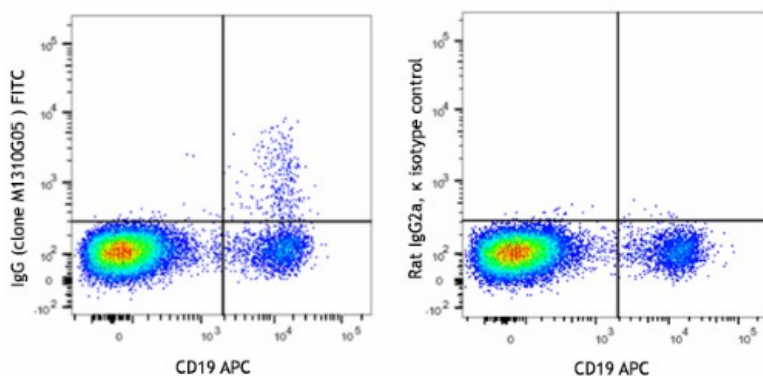
Related Protocols

[Cell Surface Flow Cytometry Staining Protocol](#)

Other Formats

Purified anti-human IgG Fc, Brilliant Violet 421™ anti-human IgG Fc, Alexa Fluor® 488 anti-human IgG Fc, PE anti-human IgG Fc, PerCP/Cyanine5.5 anti-human IgG Fc, APC anti-human IgG Fc, FITC anti-human IgG Fc, Biotin anti-human IgG Fc, Brilliant Violet 510™ anti-human IgG Fc, Alexa Fluor® 647 anti-human IgG Fc, PE/Cyanine7 anti-human IgG Fc, APC/Fire™ 750 anti-human IgG Fc, TotalSeq™-A0375 anti-human IgG Fc, TotalSeq™-C0375 anti-human IgG Fc, TotalSeq™-B0375 anti-human IgG Fc, APC/Cyanine7 anti-human IgG Fc, KIRAVIA Blue 520™ anti-human IgG Fc

Product Data



Human peripheral blood lymphocytes were stained with CD19 APC and IgG (clone M1310G05) FITC (top) or rat IgG2a, κ FITC isotype control (bottom).

For research use only. Not for diagnostic use. Not for resale. BioLegend will not be held responsible for patent infringement or other violations that may occur with the use of our products.

*These products may be covered by one or more Limited Use Label Licenses (see the BioLegend Catalog or our website, www.biolegend.com/ordering#license). BioLegend products may not be transferred to third parties, resold, modified for resale, or used to manufacture commercial products, reverse engineer functionally similar materials, or to provide a service to third parties without written approval of BioLegend. By use of these products you accept the terms and conditions of all applicable Limited Use Label Licenses. Unless otherwise indicated, these products are for research use only and are not intended for human or animal diagnostic, therapeutic or commercial use.

8999 BioLegend Way, San Diego, CA 92121 www.biolegend.com
Toll-Free Phone: 1-877-Bio-Legend (246-5343) Phone: (858) 768-5800 Fax: (877) 455-9587