

FITC anti-human TCR α/β Antibody

Catalog# / Size	306705 / 25 tests 306706 / 100 tests
Clone	IP26
Regulatory Status	RUO
Other Names	α/β TCR, TCR α/β
Isotype	Mouse IgG1, κ
Description	The IP26 antibody reacts with a monomorphic determinant of the α/β T-cell receptor, which is expressed on greater than 95% of normal peripheral blood CD3 ⁺ T cells. The α/β TCR recognizes a peptide bound to MHC leading to T-cell activation.

Product Details

Verified Reactivity	Human
Antibody Type	Monoclonal
Host Species	Mouse
Formulation	Phosphate-buffered solution, pH 7.2, containing 0.09% sodium azide and BSA (origin USA)
Preparation	The antibody was purified by affinity chromatography, and conjugated with FITC under optimal conditions.
Concentration	Lot-specific (to obtain lot-specific concentration, please enter the lot number in our Concentration and Expiration Lookup or Certificate of Analysis online tools.)
Storage & Handling	The antibody solution should be stored undiluted between 2°C and 8°C, and protected from prolonged exposure to light. Do not freeze.
Application	FC - Quality tested
Recommended Usage	Each lot of this antibody is quality control tested by immunofluorescent staining with flow cytometric analysis . For flow cytometric staining, the suggested use of this reagent is 5 μ l per million cells in 100 μ l staining volume or 5 μ l per 100 μ l of whole blood.
Excitation Laser	Blue Laser (488 nm)
Application Notes	Additional reported applications (for the relevant formats) include: T cell activation. When co-staining with anti-CD3, we recommend using clone UCHT1, since we have confirmed that IP26 does not compete with this clone. Other anti-CD3 clones may compete out the binding of IP26.
Application References (PubMed link indicates BioLegend citation)	<ol style="list-style-type: none"> Schlossman S, <i>et al.</i> Eds. 1995. Leucocyte Typing V. Oxford University Press. New York. (FC) Joseph A, <i>et al.</i> 2008. <i>J. Virol.</i> 82:3078. (FC) PubMed Pinto JP, <i>et al.</i> 2010. <i>Immunology.</i> 130:217. PubMed
Product Citations	<ol style="list-style-type: none"> Cheriana A, <i>et al.</i> 2017. <i>Neurochem Int.</i> 10.1016/j.neuint.2017.05.022. PubMed Hansen IS, <i>et al.</i> 2018. <i>Nat Commun.</i> 9:863. PubMed Hazenberg MD, <i>et al.</i> 2019. <i>Blood Adv.</i> 2.659722222. PubMed Björklund &, <i>et al.</i> 2016. <i>Nat Immunol.</i> 17:451-460. PubMed Gantner P, <i>et al.</i> 2020. <i>Nat Commun.</i> 3.297916667. PubMed Golebski K, <i>et al.</i> 2021. <i>Immunity.</i> 54(2):291-307.e7. PubMed
RRID	AB_314639 (BioLegend Cat. No. 306705) AB_314644 (BioLegend Cat. No. 306706)

Antigen Details

Structure	Ig superfamily, with CD3 forms CD3/TCR complex
Distribution	T cells, thymocytes
Function	Antigen recognition, T cell activation
Ligand/Receptor	Peptide bound to MHC
Cell Type	T cells, Thymocytes, Tregs
Biology Area	Adaptive Immunity, Immunology
Molecular Family	TCRs
Antigen References	1. Marchalonis J, <i>et al.</i> 2002. <i>J. Mol. Recognit.</i> 15:260.
Gene ID	6955 6957

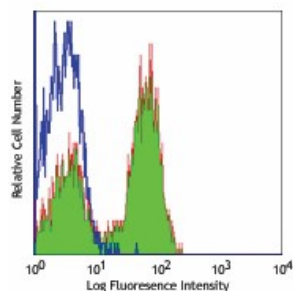
Related Protocols

[Cell Surface Flow Cytometry Staining Protocol](#)

Other Formats

Biotin anti-human TCR α/β , FITC anti-human TCR α/β , PE anti-human α/β T Cell Receptor, PE/Cyanine5 anti-human TCR α/β , Purified anti-human TCR α/β , PE/Cyanine7 anti-human TCR α/β , Alexa Fluor® 488 anti-human TCR α/β , Alexa Fluor® 647 anti-human TCR α/β , Pacific Blue™ anti-human TCR α/β , APC anti-human TCR α/β , Brilliant Violet 421™ anti-human TCR α/β , PerCP/Cyanine5.5 anti-human TCR α/β , PE/Dazzle™ 594 anti-human TCR α/β , APC/Cyanine7 anti-human TCR α/β , Alexa Fluor® 700 anti-human TCR α/β , Brilliant Violet 510™ anti-human TCR α/β , APC/Fire™ 750 anti-human TCR α/β , Brilliant Violet 605™ anti-human TCR α/β , TotalSeq™-A0224 anti-human TCR α/β , Brilliant Violet 711™ anti-human TCR α/β , Brilliant Violet 785™ anti-human TCR α/β , TotalSeq™-C0224 anti-human TCR α/β , Brilliant Violet 750™ anti-human TCR α/β , TotalSeq™-B0224 anti-human TCR α/β , PE anti-human TCR α/β , APC/Fire™ 810 anti-human TCR α/β , TotalSeq™-D0224 anti-human TCR α/β , GMP PE anti-human TCR α/β

Product Data



Human peripheral blood lymphocytes stained with IP26 FITC

For research use only. Not for diagnostic use. Not for resale. BioLegend will not be held responsible for patent infringement or other violations that may occur with the use of our products.

*These products may be covered by one or more Limited Use Label Licenses (see the BioLegend Catalog or our website, www.biolegend.com/ordering#license). BioLegend products may not be transferred to third parties, resold, modified for resale, or used to manufacture commercial products, reverse engineer functionally similar materials, or to provide a service to third parties without written approval of BioLegend. By use of these products you accept the terms and conditions of all applicable Limited Use Label Licenses. Unless otherwise indicated, these products are for research use only and are not intended for human or animal diagnostic, therapeutic or commercial use.

8999 BioLegend Way, San Diego, CA 92121 www.biolegend.com
Toll-Free Phone: 1-877-Bio-Legend (246-5343) Phone: (858) 768-5800 Fax: (877) 455-9587