



# INMUNOFLUORESCENCIA



Useful for the diagnosis of **bullous or immune diseases on skin biopsy** and the **classification of glomerulopathies in renal biopsy**



**vitro**  
master diagnóstica®

## - DIRECT IMMUNOFLUORESCENCE -

REFERENCES	ANTIBODIES	CLONES
MAD-165751QF-3	Anti-Human C3c (Polyclonal)-FITC	POLYCLONAL
MAD-165753QF-3	Anti-Human Gamma Heavy Chain (IgG)(Polyclonal)-FITC	POLYCLONAL
MAD-165755QF-3	Anti-Human Mu Heavy Chain (IgM) (47.2.E9)-FITC	47.2.E9
MAD-165756QF-3	Anti-Human C4 (Polyclonal)-FITC	POLYCLONAL
MAD-165759QF-3	Anti-Human C1q (Polyclonal)-FITC	POLYCLONAL
MAD-165761QF-3	Anti-Human Fibrinogen (Polyclonal)-FITC	POLYCLONAL
MAD-165763QF-3	Anti-Human Alpha Heavy Chain (IgA)(Polyclonal)-FITC	POLYCLONAL
MAD-165765QF-3	Anti-Human Albumin (Polyclonal)-FITC	POLYCLONAL
MAD-165779QF-3	Anti-Human Kappa Light Chain (Polyclonal)-FITC	POLYCLONAL
MAD-165781QF-3	Anti-Human Lambda Light Chain (Mc24-IC6)-FITC	Mc24-IC6

## - INDIRECT IMMUNOFLUORESCENCE -

REFERENCES	PRIMARY ANTIBODIES	CLONES
MAD-165782QF-3	Anti-Human C4d (10-11)	10-11

REFERENCES	SECONDARY ANTIBODIES	CLONES
MAD-165783QF-3	Goat Anti-Mouse IgG (H&L) - FITC	N/A

**Note:** The references indicated above are for the RTU (ready to use) format. For different presentations and formats, please contact the supplier.

## - MAIN FEATURES -



**Ready to Use  
and Concentrate  
Format**



**Complete Automation  
in MD Stainer,  
Autostainer or  
for manual use**



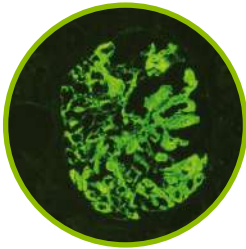
**High  
specificity  
and sensitivity**



**Primary (direct IF) and  
Secondary Antibodies  
conjugated with  
Fluorescein  
Isothiocyanate (FITC)**



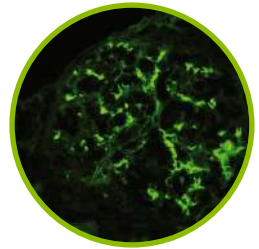
**Validated  
on frozen  
tissues**



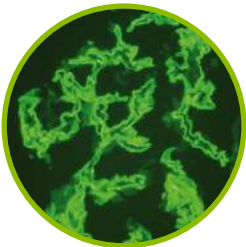
Positivity of  
anti-C1q in lupus  
nephropathy



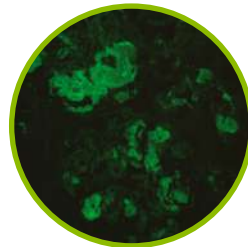
Positivity of  
anti-C3c in  
pemphigoid lesion



Positivity of anti-IgA  
with Mesangial pattern  
in IgA nephropathy



Linear positivity of  
anti-IgG in  
nephropathy



Positivity of  
anti-Lambda Light Chain  
in Renal Amyloidosis



[www.vitro.bio](http://www.vitro.bio)

C/ Luis Fuentes Bejarano 60 Ed.  
Nudo Norte (local3) 41020 Sevilla  
Teléfono: +34 954 93 32 00  
[sales@vitro.bio](mailto:sales@vitro.bio)  
[www.vitro.bio](http://www.vitro.bio)